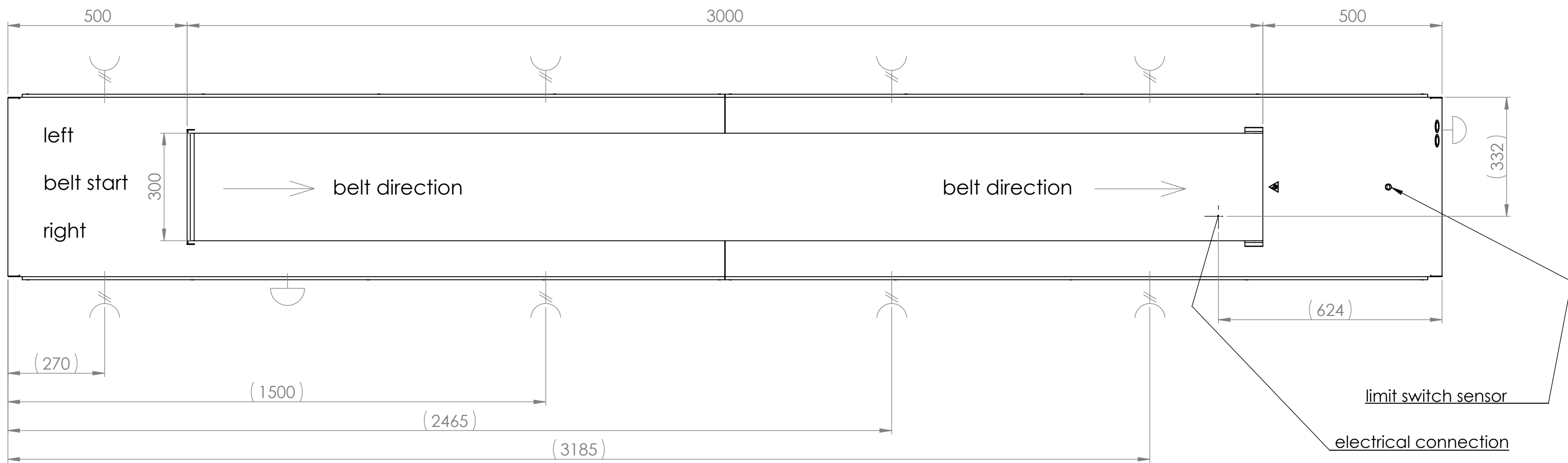
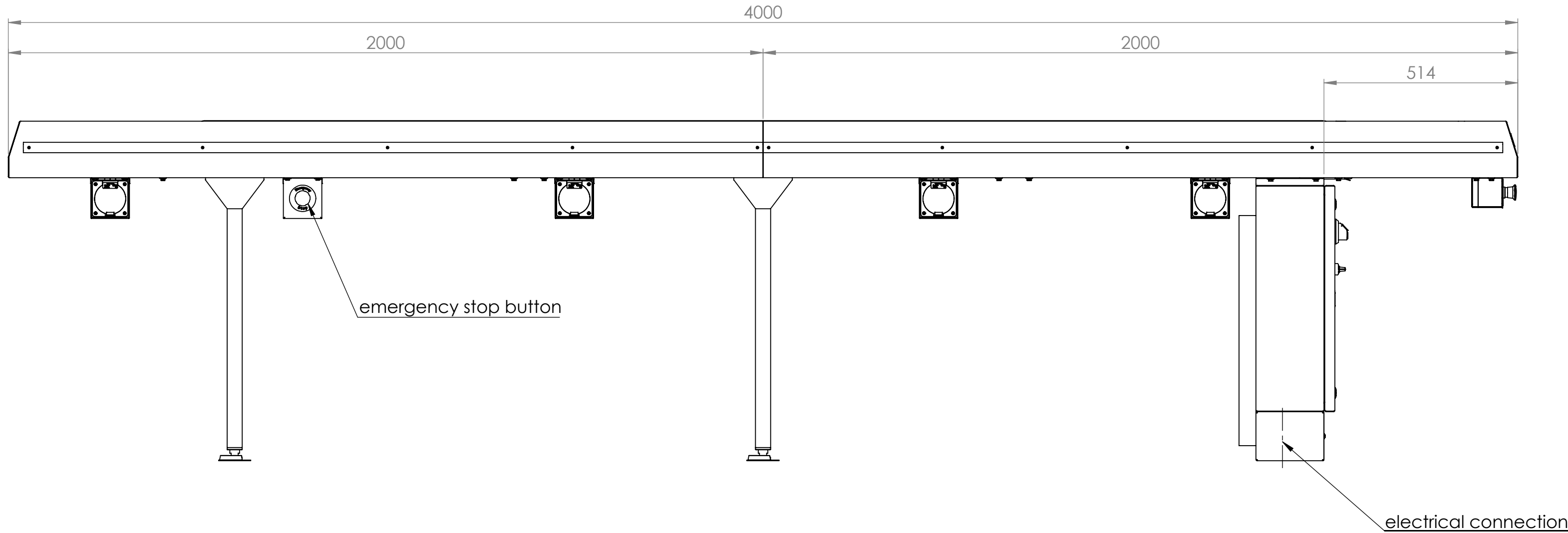
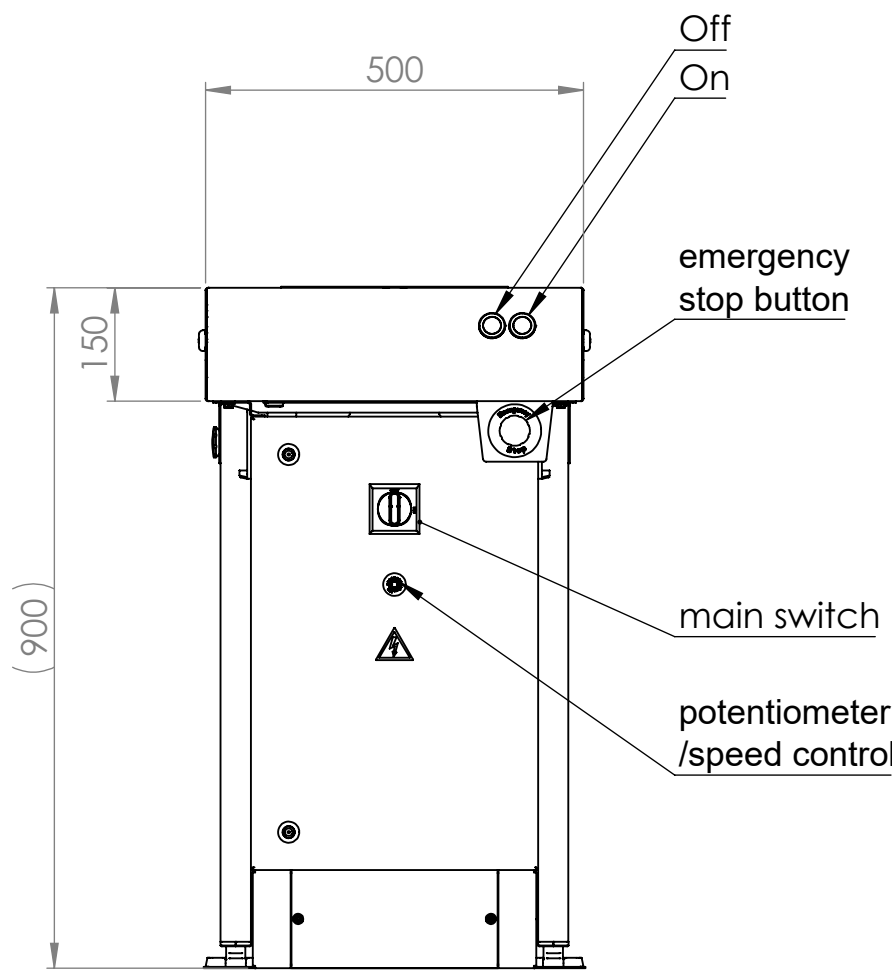


© This drawing may without our consent neither duplicated, still third persons submitted or handed over. Offences can be prosecuted under the Law over mean competition criminal pursuit to involve.

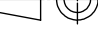
Ausguckliche Zeichnung unterliegt nicht dem Änderungsgebot!
Printed Drawing is not automatically updated!

© Diese Zeichnung darf ohne unsere Einwilligung weder vervielfältigt, noch dritten Personen vorgelegt oder ausgedruckt werden. Verstöße werden strafrechtlich verfolgt.
Wettbewerb strafrechtliche Verfolgung nach sich ziehen



Typ/Model	GSPV 4m
Empty weight in kg	90
Tray	Euronorm-tray Gastronorm-tray
Model	CNS 1.4301 2-parts
Maintenance-free Drum Motor	0,16 kW 1 piece
Speed	2.5-12 m/min
Emergency stop button	belt start - right
Emergency stop button	belt end
On/Off button	belt end
Limit switch sensor	belt end
Main switch (control cabinet)	belt end
Potentiometer (control cabinet)	belt end
GB-socket outlets 250V/13A -with RCCB protected	4 pair
Connected loads	
Control voltage	24V DC
Mains voltage	400V 50/60Hz
Total connected load	cca 20,5kW/31,2A
Connection cable	5 x6 mm²
Calculation basis:	simultaneity factor 0,6
Delivery	1-parts
Transport -Open crate ISPM15 sea+air	1x4200x750x1200mm (LxBxH)

	Accessories (if required)	
1	Socket outlets 230V (max. 12pcs)	8pcs
2	Socket outlets 400V (max. 4pcs)	-
3	On/Off button - belt start	-
4	Foot switch on switch cabinet	-
5	Cable duct - plastic, on both sides	-
6	Bumper protection, on both sides	Yes
7	Swing-out table (GN 2/3-20)	-
8	Folding table 600x400 mm	-
9	Model mobile to max.6000 mm	-
10		

1								Date		Name		
Index	Rev.-No.	Description of modification						AZ	Std. paper-size		A1	
B.PRO		Scale	M 1:10	Group	160	Status	freigegeben	Document type				
								Material	Surface			
		Date		Name		Document item-no.		2000299918.01				
		07.01.2023		PetrJ								
Tolerances according to ISO 2768-cL		Checked	13.01.2023	MartynekR		SAP material-no.		00383736				
		Approved	13.01.2023	MartynekR								
Origin		Description										
		GSPV 4m BN4501439190 02										
Notice:								2000256087	Sheet	1	of	1